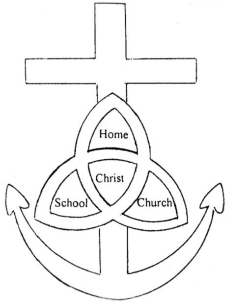


ST. PAUL EV. LUTHERAN CHURCH

October 2025



Building Relationships
in Christ

St Paul Ev Lutheran Church

1415 Tenth Ave
Rochelle IL 61068
Ph: 815-562-2744

Church Email:

[churchoffice@stpaul](mailto:churchoffice@stpaulrochelleil.org)

rochelleil.org

Website: stpaulrochelleil.org

Vacancy Pastor

Rev. Michael Wolff

Marcia Schnorr, DCM

Parish Nurse

After hours: 562-6823

St. Paul Lutheran School

Ph: 815-562-6323

Steve Hall, Principal

School Email:

office@stpaulrochelleil.org

Website:

stpaulrochelleil.org

JOIN US!

In person at

6:00pm Saturday
or 9:00am Sunday



OR

FacebookLive
At 9:00 am

OR

WRHL Radio
1060AM
At 10:00 am
Or
93.5 FM



St. Paul Lutheran Church is a member congregation of the Lutheran Church Missouri Synod. The LCMS has hundreds of schools around the country and a few worldwide. The vast majority of these schools provide an excellent education in a Christ-centered environment.

We are called Lutheran because we are named after Martin Luther. Martin Luther was a Roman Catholic priest during the 1500's. There

are volumes written about the man, but suffice it to say, he simply wanted the Church to go back to the Bible. He did not set out to fracture the Church, but rather get the church back to the Word of God.

You may have heard of the three "solas":

Sola Scriptura – "By Scripture Alone". All scripture is "God-breathed, the divine Word of God

Sola Fide: - "By Faith Alone" Salvation comes by faith, not by good works

Sola Gratia: - "By Grace Alone" Salvation comes by divine grace.

Reformation Day is October 31. Lutherans celebrate this date every year not because of winning some kind of protest or rebellion, rather because a man was willing to stand up for what the Bible says. It can really all be summarized in Ephesians 2: 8-9:

"For it is by grace you have been saved, through faith---and this is not from yourselves, it is the gift of God----not by works, so that no one can boast."

CALL MEETING RESULTS

At the September 21st Call meeting, the congregation voted to issue a Call to Rev. Michael Gudgel from Lemont, IL. Please keep him, his family, and his current church St. Matthew in prayer as he deliberates our Call.



President's Notes

I have written in the past about the many members that donate their time, talents and treasures to keep our church running. Without them we could not function. From serving on boards /committees, cleaning our Church, repairing our facility, making our grounds beautiful and countless other activities. These are the volunteers that truly put the 'we' before the 'me'. They have given so very much. Day after day, year after year,

So it is particularly hard for me to single out one group in particular, but in this instance I feel it is appropriate. That group is the Call Committee. Their preparatory work started in January of 2023, months before Pastor Hoffman retired. They have had countless meetings, countless zoom interviews and too many meetings in a frigid overflow room during January and February. For two years and eight months they have been searching for the one the Lord has chosen for us. Throughout all the ups and downs their dedication and perseverance has been incredible. To each of them I wish to say thank you.

Blessings

Bob Mortimer 312.316. 6519

WORSHIP THIS MONTH

October 4	6:00 p.m.	Contemporary
October 5	9:00 a.m.	Liturgical w/Communion
October 11	6:00 p.m.	Liturgical w/Communion
October 12	9:00 a.m.	Liturgical
October 18	6:00 p.m.	Contemporary
October 19	9:00 a.m.	Liturgical w/Communion
October 23	2:00 p.m.	Thursday Fellowship Worship
October 25	6:00 p.m.	Liturgical w/Communion
October 26	9:00 a.m.	Liturgical

LUTHERAN HOUR MINISTRIES

WRHL 1060 AM—7:30am Sundays

October 5	"Every Age Has a Stage"
October 12	"When a Cakewalk Becomes a Crucible"
October 19	"Gods Help Dwells in Us"
October 26	TBA

Join us for our 9:00am Sunday service or listen to our broadcast on WRHL(1060AM) or (93.5 FM) at 10a.m. It is also on Facebook Live at 9:00am.

Worship Anew

Comcast channel 138 on TLN—11:30am Sundays

October 5	"Fan Into Flame"
October 12	"Thankful for Being Thankful"
October 19	"What Will Jesus Find?"
October 26	"In Christ's Word"

MONTHLY MISSION OFFERING



This month we are able to pray for and support a vital and important ministry right here at St. Paul! We will be asking for you to give generously and lovingly to the "Health and Human Care/ Parish Nurse" ministry. What is being done is touching many people with spiritual, medical and physical needs.

Please bring your Mission Offering on the weekend of **October 18 & 19**. Let us support, pray for and encourage this special ministry among us, in our community, NID and the world.

What is "Healthy and Human Care" Ministry?

We are blessed to have at St. Paul a vital and vibrant ministry through the "**Health and Human Care**" board, which includes the ministry of the **Parish Nurse** (Marcia Schnorr). The Health and Human Care board helps carry out many functions and activities that correspond with the Parish Nurse.

This ministry offers health education through health fairs, screenings, first aid and CPR classes, support groups and care from newborn to elderly.

Also, one-on-one intentional interaction brings opportunities to evaluate personal health and needs; including screenings and health records in the school. This extends to the congregation and community, such as through disaster relief, coordination and care. They also respond with transportation, meals and coordinating medical care. There are events and activities that promote fellowship, develop faith (through Bible studies) and unite in caring and compassionate visits and interaction.

By sharing in Christ's healing love to persons of all ages, Parish Nurses promote a ministry of health. Concern for the whole person makes parish nursing a wonderful complement to good pastoral care and assists the Body of Christ in care and service to their congregation and community.

Fall Potluck

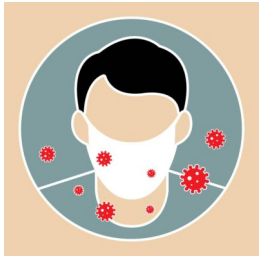


The IN/OR Board invites everyone to a Fall Potluck on October 10th at 5:30pm. Bring a dish to pass and the meat, table service and drinks will be provided. There will be entertainment, games and prizes. It's free for everyone!

The Parish Nurse's Notes:

The October health letter has been provided by Colette Eckhard, RN a faithful volunteer on the parish nurse team who serves the Lord and our congregation by providing the mandated monthly maintenance review and assists with other special programs or projects.

LONG COVID



Most of us would like nothing better than to see COVID in our rearview mirror and not have to deal with the disease again. According to the World Health Organization about 6% of people who have had COVID-19 also develop post COVID-19. This condition is known by several names including

long COVID, long haul COVID, post-COVID condition, chronic COVID, and post-acute sequelae of SARS-CoV-2.

Although there is no universal definition, some experts have defined long COVID as a long-lasting chronic condition triggered by the virus that causes COVID-19. While COVID-19 is contagious and easily spread from person to person, long COVID is **not** contagious and doesn't spread between people. People who have had COVID-19 and even those who did not experience symptoms while they were positive for COVID-19 can develop long COVID. It can show up weeks or even months after recovery.

The literature lists over 200 symptoms linked to long COVID. The symptoms can remain the same over time, increase, or go away and re-occur later. The eleven most common symptoms include: extreme tiredness, "brain fog", lightheadedness, problems with taste and smell, thirst, sleep problems, shortness of breath, chronic cough, headache, fast or irregular heartbeat, and digestive problems such as loose stools, constipation or bloating.

Long COVID can trigger or worsen diseases such as migraine headaches, lung disease, autoimmune diseases, diabetes, kidney disease, stroke, blood clots, fibromyalgia, heart disease, mood disorders, and others identified as research continues.

Presently, there is no cure for long COVID. Treatment includes managing symptoms and treating diseases caused by long COVID. Many clinicians remain unsure of how to evaluate and manage individuals with this condition. Consequently, it is often underdiagnosed. Family and employers may dismiss the complaints as unfounded. Prevention of COVID-19 through proven public health practices is the key to preventing long COVID.

References:

Greenhalgh, Trisha; Sivan, Manoj; Perlowski, Alica; Nikolich, Janko; Long COVID: a clinical update. www.thelancet.com Vol 404 August 17, 2024;707-724.
World Health Organization; Post COVID-19 condition (long COVID); 26 February 2025.
National Institutes of Health; Long COVID Research and Resources; December 20, 2024.
Mayo Clinic; Long COVID: Lasting effects of COVID-19; August 23, 2024.

Submitted by Carol Broemmer, RN, MA
LCMS Missouri Parish Nurse District Representative
cbroemmer@charter.net

Parish Nurse Office Hours remain 8:00-11:30 am Monday through Friday unless noted otherwise. You may also contact her at home (815-562-6823) after hours. If she is not home, please leave a message. It will be returned as soon as possible. **There will be no office hours October 8-17 while Marcy is on a parish nurse ministry trip to Seoul South Korea. During that time, if you have a need for a parish nurse, please contact the church office or Maggie Niemi.** There will also be no office hours on October 21 due to an NID Parish Nurse Meeting in Arlington Heights.

Christian Senior Ministry- outreach to senior living sites- will be Thursday, October 2 with a brief devotion led by Marcy. Events are scheduled for Hawthorne Inn, Liberty Village (Memory Lane), and Lincoln Manor. If you would like to join us, contact Marcy for time and location.



Senior Special will be Friday, October 3rd at 10am. Jane Prunty will provide a helpful presentation on various medical alert devices. If you are considering one for yourself—or a loved one—this information will be useful. If you have one, come and share your experiences. If you know someone who would benefit from the information, please invite them to come with you.

The Board for Health and Human Care will meet on Monday, October 6 at 4:30pm

OK Club will meet Friday, October 10 at noon at Aldos. A brief devotion and a table talk activity will be planned. If you would like to attend, contact Evelyn Hintzsche at 815-562-4668.

Senior Supplier Club will meet at 5:30pm at Old School Pizza in Malta. A brief devotion and a seasonal activity will be the diversion. If you would like to attend, please contact Dave Stewart at 815-973-4938.

St. Luke Day will be observed the weekend of October 18-19 with a display highlighting some of the activities provided in the congregation, the community, and the world. A supply of books you may find useful for you or someone you know will be available. Supplies are limited—offered at no cost.

The parish nurse team is directed by Marcy Schnorr. Other members of the team include Sylvia Burdin (school health), Colette Eckhardt (AED maintenance and special projects), Linette Feltes (parish nurse newborn visits and assisting with homebound and nursing home visits, and Maggie Niemi (assisting with homebound and nursing home visits, and primary relief when Marcy is away).

The parish nurse team will be rededicated during the Sunday service

Thursday Worship and Fellowship will be Thursday, October 23 at 2pm. This serviced is especially planned for people whose health concerns make attending the regular weekend services difficult. Pastor Wolff will provide an abbreviated service with communion. Marcy will be available to assist with any health needs. If you need assistance in obtaining transportation, please contact Marcy a few days early and every effort will be made to provide a ride. A time for fellowship will follow.

OK Club will meet Friday, October 24th at noon at church with lunch from the Country School. A brief devotion and activity related to Reformation Day will be the diversion. If you would like to attend, please contact Evelyn Hintzsche at 815-562-4668.

Senior Outing for October will be Tuesday, October 28 to Sycamore. We will leave the church parking lot at 11am and go to lunch at Nat's on Maple and then stop at the Christian Book and Gift Shop. If you would like to participate, contact Marcy by October 22nd to assure sufficient transportation and to make reservations for lunch.

Senior Council will meet on Friday, October 31 at 10am. Plans will be discussed for the remainder of the year and initial plans for 2026. Members of the council are encouraged to attend—but any senior is welcome to attend.

Parish Nurse Initiative in Ethiopia. There is a healthcare crisis in Ethiopia—especially in the rural settings where there is a lack of medical supplies, medicine, and health professionals. Mothers walk miles to reach a clinic with their sick children only to learn there is no medicine or health care supplies to provide any care. Master Builder Center and the Lutheran Church in Ethiopia (EEMY) are launching a parish nurse program to provide hope and resources for this urgent need. Marcy has been asked to donate her time and expertise to train the nurses and equip the churches to meet this unique challenge. Your prayers and any donations towards the medicines and supplies will be appreciated. Contact Marcy for more information.

Charles Eckhardt 10/01

Kris Eyster 10/01

Carol Shempert 102 10/01

4404 Secluded Hollow

Austin TX 78727

Carol Elliott 82 10/05

1072 Westview Dr

Beckett Metzger 10/5

Pat Gonzales 10/6

Jase Truckenbrod 10/05

Joey Haedt 10/08

Mary Clark 90 10/09

930 N 12th St

Baylor Metzger 10/09

Charlene Smith 87 10/10

301 School Ave Apt 2

Roxanne Maliszewski 10/12

Scott Harms 10/12

Aaron Mehrings 10/15

Dawn Sage 10/15

Rhonda O'Rorke 10/15



Mary Beth Metzger 10/17

Payton Paulsen 10/18

Caitlin Hensley 10/18

Cole Hensley 10/18

Ben Walter 10/20

Aubrielle Lodico 10/21

Georgia Broome 97 10/22

929 N Main St Rochelle

Jeff Casey 10/22

Colette Eckhardt 10/23

John Vandre 10/23

Jeff Dilling 10/24

Daniel McAnly 10/24

Lyle Warner 87 10/25

1772 Ashton Rd Ashton 61006

Alice Myers 88 10/27

400 N Tenth St

DeWaine Svela 10/30

ANNIVERSARIES

M/M Matt Svela 10/3

M/M Ernest Chisamore 75 10/8

215 Drake Ave Rochelle

M/M Steven Truckenbrod 10/21

M/M Bill Usilton 10/23

M/M Michael Casey 10/24

M/M Keith Lamb 10/24

M/M Patrick Pauser 10/29

If we missed your important day or have it listed incorrectly, please call the church office (815.562.2744)

St. Paul Lutheran School

"Putting Faith in Education"



Thoughts from the Principal...

On any given weekend, about a hundred people worship at St. Paul. That is a combination of the Saturday and Sunday services. I heard our circuit counselor say not too long ago that the hundred represents more than most LCMS churches in our area. But, a hundred doesn't seem like enough.

People's motivation to worship or not worship is not my business. But I can tell you my motivation. In response to what God has done for me, I want to go to His house and worship Him. I need to show Him my gratitude for what he has done for me. I don't go to be entertained. I don't go to see what I can get out of it. I go to worship my creator and my redeemer. If I get something out of it, all the better.

It is important that we surround ourselves with other Christians in the setting of formal worship. It doesn't matter if it is contemporary or liturgical. It only matters that we worship together. I heard this analogy long ago and shared it when I led chapel recently. Like newborn chicks gather together by the warm light source, so we as Christians need to gather together under the warmth of the light of Jesus. If a chick does not gather with the others under the warm light, it will perish. Similarly, if we do not gather together under the warm light of Jesus's love, we too run the risk of falling away spiritually.

"Remember the Sabbath Day by Keeping It Holy".

Blessings to All!
Steve Hall: Principal



The school newsletter, "Crusader Corner", is published each Monday and sent out via email. If you are not on that email list and would like to know what's happening in the school, contact Mr. Hall (shall@stpaulrochelleil.org) and let him know you would like to receive it and he will add you to the list.



Grandparents' Day is scheduled for October 31st. We are so glad that we can hold this great event. Mark your calendars.

The annual special Veterans Day special chapel service is scheduled for November 12th.

The congregation is invited to all of our chapel services, but we

especially invite members and veterans to this special chapel. We thank Mrs. Bresson, our 6th grade homeroom teacher, for the excellent job she does putting this service together each year.



School chapel services are held each Wednesday at 8:40. Services are led by Mr. Hall, the teachers, guest speakers (for example: Pastor Rosebrock from Immanuel, Lindenwood), Pastor Wolff, various classes and teachers, and sometimes Lois Stewart and President Buss from the NID office! All are invited to attend these chapel services.



This year more than ever funds are needed to support the Frieda Pickreign/Jane Reineck Scholarship Fund. We have a goal to build to fund to more than \$30,000.00 to use to award scholarship money for the 2026-2027 school year. More information will be available soon.

October 2025

Sunday	Monday	Tuesday	Wednesday	Thursday	Friday	Saturday
28 St Paul Walk-A-Thon 9:00am Worship 10:00am Bible Class	29	30 Newsletter Mailing 7:00am Men's Bible Breakfast @ Sunrise 12:00pm Sr Outing to Frescos - Japanese Gardens	1 8:40am Chapel 9:45am Women's Bible Studies	2 Outreach to Local Sr Living Sites	3 10:00am Senior Special - Jane Prunty	4 6:00pm Contemporary Worship 6:00pm K-4th Choir
5 9:00am Worship w/Comm 10:00am Bible Class	6 5:30pm Dayschool Board	7 7:00am Men's Bible Breakfast @ Sunrise 5:30pm Inreach/Outreach	8 8:40am Chapel	9 1:30pm Esther-Naomi Circle	10 12:00pm OK Club @ Aldo's RSYF Evelyn 815-562-4668 5:30pm Fall Potluck	11 6:00pm Worship w/Comm
12 9:00am Worship 10:00am Bible Class	13 4:30pm Board of Health & Human Care 5:30pm Elders	14 7:00am Men's Bible Breakfast @ Sunrise 1:00pm Hannah-Tabitha Circle @ Church 6:30pm WOW Bible Study	15 Newsletter Deadline 8:40am Chapel	16	17 5:30pm Sr Supper Club @ Old School Pizza - Malta	18 Monthly Mission Offering - HHC - Parish Nurse Ministry St. Luke Day 6:00pm Contemporary Worship
19 Monthly Mission Offering - HHC- Parish Nurse Ministry St. Luke Day 9:00am Worship w/Comm 10:00am Bible Class	20 6:00pm Church Council	21 NO Parish Nurse Hours 7:00am Men's Bible Breakfast @ Sunrise	22 8:40am Chapel 9:45am Women's Bible Studies	23 2:00pm Thursday Fellowship Worship	24 OK Club @ church RSYF to Evelyn 815-562-4668	25 6:00pm Worship w/Comm
26 9:00am Worship 10:00am Bible Class	27	28 7:00am Men's Bible Breakfast @ Sunrise 11:00am Sr Outing - Sycamore 6:30pm WOW Bible Study	29 8:40am Chapel 9:45am Women's Bible Studies	30	31 School Grandparents Day 10:00am Sr Council	1 9:00am Christian Ministry Team Appreciation Breakfast 6:00pm Contemporary Worship

Puzzle!

Who made the following statements in the Bible?

- "Am I my brother's keeper?"
Samuel, John, Cain, Andrew
- "I have no silver and gold, but what I do have I give to you."
Peter, James, John, Paul
- "What is truth?"
Herod, Pilate, Simon Magus, Cornelius
- "Choose you this day whom you will serve ... but as for me and my house, we will serve the LORD!"
Abraham, Jacob, Moses, Joshua
- "You are the Christ, the Son of the living God."
Nathaniel, John, Peter, Paul
- "In a short time would you persuade me to be a Christian?"
Herod Agrippa, Pilate, Caiaphas, Annas
- "Do not urge me to leave you or to return from following you. For where you go I will go."
Rebekah, Rachel, Ruth, Rahab
- "I have fought the good fight, I have finished the race, I have kept the faith."
Paul, Peter, James, Barnabas

Answers: 1. Cain (Genesis 4:9); 2. Peter (Acts 3:6); 3. Pilate (John 18:38); 4. Joshua (Joshua 24:15); 5. Peter (Matthew 16:16); 6. Herod Agrippa (Acts 26:28); 7. Ruth (Ruth 1:16); 8. Paul (2 Timothy 4:7).

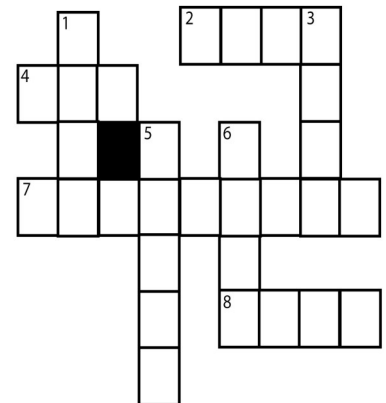
Puzzle!

Use the words provided to complete the puzzle.
Then write the numbered words in the correct blanks below to complete Psalm 104:24, NIV.

WORDS
EARTH, CREATURES,
MADE, THEM,
FULL, HOW,
LORD, YOUR

ACROSS
2. Rhymes with gem.
4. Rhymes with cow.
7. Rhymes with features.
8. Rhymes with cord.

DOWN
1. Rhymes with pour.
3. Rhymes with fade.
5. Rhymes with worth.
6. Rhymes with pull.



_____ many are _____ works, _____ !
4 1 8
In wisdom you _____ all;
3 2
the _____ is _____ of your _____ .
5 6 7

Psalm 104:24, NIV

Answer: How many are your works, Lord! In wisdom you made them all; the earth is full of your creatures. Psalm 104:24, NIV

ST PAUL EV LUTHERAN CHURCH
1415 Tenth Avenue
Rochelle IL 61068

RETURN SERVICE REQUESTED

NON-PROFIT ORGANIZATION

U.S. POSTAGE PAID
ROCHELLE, ILLINOIS 61068
PERMIT NUMBER 93

The mission of St. Paul Ev. Lutheran Church:
Building relationships in Christ now and forever.

JOIN US!

Live in person on Saturday at 6:00pm or Sunday at 9:00am



OR

9:00 am Facebook Live - St. Paul Lutheran Church Page

OR

10:00 am on WRHL Radio 1060AM or 93.5 FM

Pastor Michael Wolff, Vacancy Pastor 562-2744

Marcia Schnorr, Parish Nurse 562-6823

Steve Hall, Principal 562-6323

Church Office 562-2744, School Office 562-6323,

Church Office E-Mail Address: churchoffice@stpaulrochelleil.org Website: stpaullev.org



Reformation Sunday

Therefore, since we have
been justified through
faith, we have peace with
God through our Lord Jesus
Christ, through whom we
have gained access by faith
into this grace in which we
now stand.



Romans 5:1-2, 10